

PowerConnect

Visión general de uniones a momento soportadas

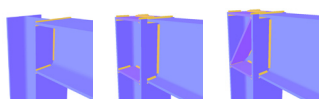
UNIONES A MOMENTO

UNIONES A CORTANTE

UNIONES SECCIONES HUECAS

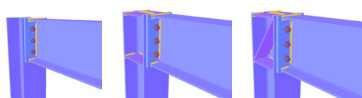
VIGA SIMPLE A ALA DE COLUMNA

Soldada

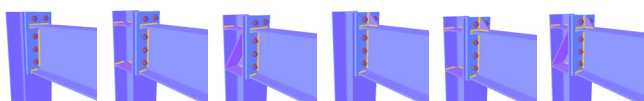


Placa de extremo a momento atornillada

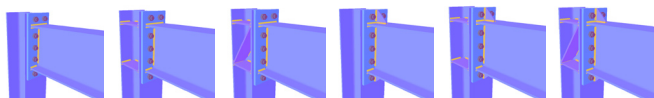
placa de extremo enrasada



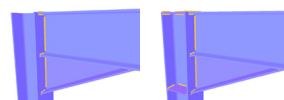
placa de extremo extendida en un lado



placa de extremo extendida en dos lados

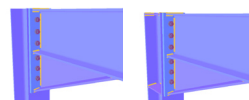


Viga con refuerzo soldada

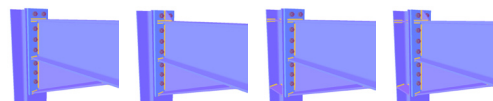


Placa de extremo con refuerzo

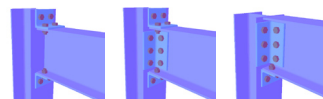
placa de extremo enrasada



placa de extremo extendida

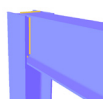


ángulos de unión atornillados



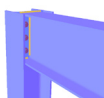
VIGA A ALMA DE COLUMNA UN LADO

Soldada

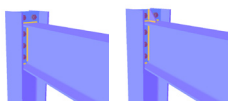


Placa de extremo a momento atornillada

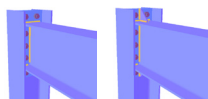
placa de extremo enrasada



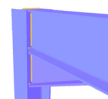
placa de extremo extendida en un lado



placa de extremo extendida en dos lados

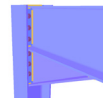


Viga con refuerzo soldada

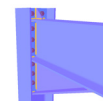


Placa de extremo con refuerzo

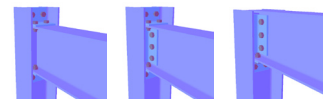
placa de extremo enrasada



placa de extremo extendida

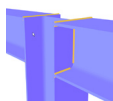


ángulos de unión atornillados

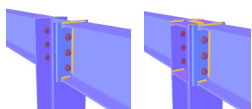
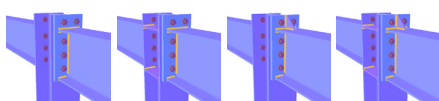
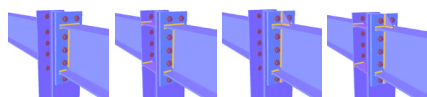


VIGA A ALA DE COLUMNA DOS LADOS

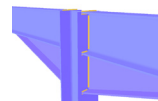
Soldada



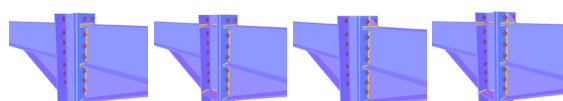
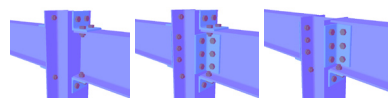
Placa de extremo a momento atornillada

placa de extremo enrasada*placa de extremo extendida en un lado**placa de extremo extendida en dos lados*

Viga con refuerzo soldada



Placa de extremo con refuerzo

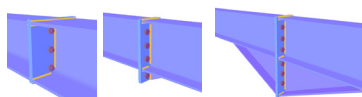
placa de extremo enrasada*placa de extremo extendida**ángulos de unión atornillados*

VIGA A VIGA

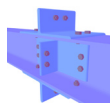
Soldada



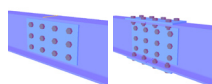
Placa de extremo a momento atornillada



Ángulos de unión atornillados

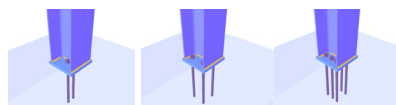


Empalme atornillado

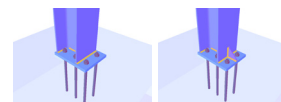


PLACA BASE DE COLUMNA

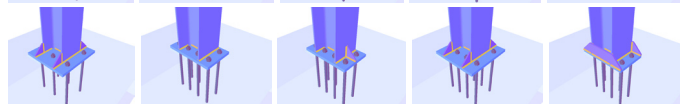
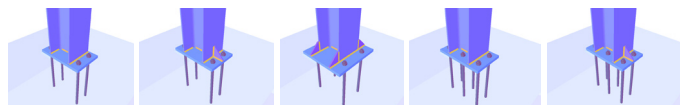
Placa base enrasada



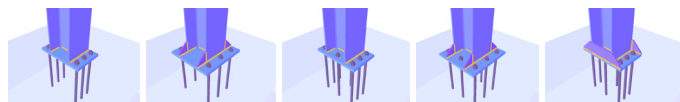
Placa base extendida (un lado)



Placa base extendida (2 lados - 2 anclajes)



Placa base extendida (2 lados - 3 anclajes)



Distribuido en España por Construsoft S.L.

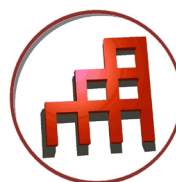
construsoft

Oficina Central ☎ +34 936 327 350

Delegación Centro ☎ +34 925 532 029

www.construsoft.es

PowerConnect es un software de BuildSoft NV



Hundelgemsesteenweg 244/1

B-9820 Merelbeke, België

☎ +32 (0)9 252 66 28

☎ +32 (0)9 252 66 29

✉ info@buildsoft.eu

🌐 www.buildsoft.eu

www.structuraldesignanalysis.com